



Connect with the **Community Care Hub**

Health and social systems can be difficult to navigate on your own.

Connecting with a care coordinator can help you:



Connect with housing opportunities



Find family supports like childcare



Improve your access to fresh food



Find help with transportation access

....and more!

How it works

1

Fill out the form on the website and tell us a bit about yourself and your needs so we can find the right fit

2

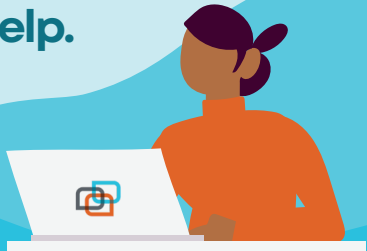
Our experts match you with a care coordinator at a local organization who can help

3

Your care coordinator will reach out to you directly to help. This service is completely **FREE** and designed to help you connect to care

Health systems are complicated.

We're here to help.



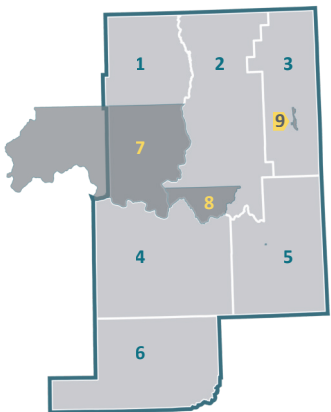
Fill out the form on our website to be connected with a care coordinator!



Our goal is to help you get connected to the care you need from someone you trust. Our self referral form helps us match you with someone who understands your unique needs and can be with you every step of the way. This service is completely FREE, fill out our short online form and someone will be in touch to help.

Our Service Area

- 1. Ferry County
- 2. Stevens County
- 3. Pend Oreille County
- 4. Lincoln County
- 5. Spokane County
- 6. Adams County
- 7. Confederated Tribes of the Colville Reservation
- 8. Spokane Tribe of Indians
- 9. Kalispel Tribe of Indians



Learn more at betterhealthtogether.org